

Matheson Junior High School

Tiger Tales

Volume 7, Issue 2

November 2008

INSIDE THIS ISSUE:

World Language & Music Departments	2
Counseling Corner	2
Homework Study	4
Cafeteria	4
Community Council	4
Student of the Month	5
P.T.S.A.	5-7

Principal's Message

We have just finished the first term of this school year, and we would like to share some of the highlights thus far, beginning with academics. At the end of this first term we had 434 students, which accounts for nearly half of the student body, earn *Class Act*, a recognition that combines both high academic and citizenship achievement. These students have received a great reward pack and will be attending a special activity.

This year we have several new teachers who have made an immediate impact both in the classroom and in the school after only one term, and we are excited to see their continued contribution to the school and expectations that the veteran teachers have helped establish.

We have always felt great support from parents and community members and this year has been no exception. Through the first term we have already exceeded previous year's membership for PTSA. Both the school PTSA board and the School Community Council are fully staffed and providing great support to the students and staff. We sincerely thank all parents and community members involved in any way with Matheson and encourage anybody interested in becoming involved to do so by contacting the school or a member of the PTSA board.

Last school year it was announced the Matheson was named a State School of Character for Utah and was recommended for the National School of Character

award. During the process of reviewing schools for this prestigious award, the Center for Education Partnership awarded Matheson the *Promising Practice* for the Community of Caring forums. We are proud and honored to receive this award and thank all involved who made it possible. As we receive these awards for the character demonstrated by our students and staff here at Matheson we want to strive to maintain a strong character building emphasis. In addition, we feel that there is a strong academic emphasis that students are realizing more and more. We believe that we will continue to be a school of character and that we will be equally recognized academically this coming year.

Jared Reynolds, Assistant Principal

Mix It Up Day

Students at Scott M. Matheson Junior High challenged social, racial boundaries during Seventh Annual National "Mix It Up at Lunch Day".

Magna — Students at Scott M. Matheson Junior High joined more than 4 million others across the country to challenge social and racial boundaries on Thursday, Nov. 13, as part of the seventh annual Mix It Up at Lunch Day, a project designed to foster respect and understanding in schools and communities.

Mix It Up encouraged students to question and cross boundaries by sitting with someone new in the cafeteria for just one day. Many schools are planning activities for the whole day, and some use the event to kick off a yearlong exploration of social divisions. Matheson Junior High created awareness of the importance of tolerance in schools and the community

by having a Mix It Up activity during lunch that day.

Prior to the event, student-body president, Priscilla Perez, hoped that this would be a great experience for all. She was not disappointed because she got to see students talking to different groups of people they don't usually talk to. "Mix It Up day was very fun and was a great learning experience. We all met new people and saw others make new friends."

Rebecca Ibarra, founder and former advisor to the Tiger Culture Club says, "Mix It Up" helped break down cultural barriers while building trust among students. This type of program should be part of every school and should be practiced every day."

A Matheson Junior High student said that activities like these are good because it

"gets people to hang out or blend with another group of people and that way we can all get along and hang out and be friends."

More than 8,000 schools participated in this year's program, which is sponsored by the Southern Poverty Law Center's Teaching Tolerance project. Educators, parents and students, alike, are encouraged to visit www.mixitup.org to obtain more information and stories about breaking down cultural and social barriers.

"This year, Mix It Up Day has a special significance because of the historic election of Barack Obama as the first black president," said Mix It Up Director Samantha Elliott Briggs. "Students across America are very excited about doing their part to tear down the walls that divide".

Special points of interest:

- 434 Students qualified for Class Act!
- "Got Language" - Brenna Johnson competes in the UFLA Conference
- Reality Town is coming to Matheson for 9th graders
- GSD Citizenship requirements for Graduation

World Language

The Department of World Languages (WL) welcomes you to a new school year full of learning! We encourage all students to enroll (2-3 years) in a WL during their junior and/or senior high experience. This year, at Matheson, we have 58% of our students enrolled in a WL! We hope that as our program builds through the years, more languages will be offered and more students will enroll. A few good reasons to learn another language come from the NEA's research findings about the benefits to academic progress in other subjects. For example:

- Learning another language can enhance knowledge of English structure and vocabulary;
- Studying another language for 90 minutes a week, over a semester, can significantly improve math and language arts scores; and

- Mastering the vocabulary of a second language enhances student comprehension and abilities in reading, writing, mathematics and other subjects.

We will share even more research findings in future newsletters, so stay tuned!

Information Highlights

- All teachers have websites (with email) for students/parents to use. Teachers will post things such as assignments, worksheets, disclosure statements, class information and rules, events, resources, etc. These will be linked to the school website in the "Departments" link.
- Ask your student about the word strips posted on the walls and classrooms throughout the school. Our department has posted eleven words that

will be used to explain language learning. Each quarter, new words will be added. It's a great way to build vocabulary for all students.

- Congratulations and 'thank you' goes to Brenna Johnson (2nd year student) who recently competed in a poster contest for the Utah Foreign Language Association's (UFLA) conference on November 6, 2008. Brenna's was the only poster entered from Matheson Jr. High this year. The theme of the poster contest was "Got Language?" Unfortunately, at the time of this submission, we do not have results.

Please encourage your student to study at least 5-10 minutes every day. He/She has flashcards and class notes to study. This will greatly enhance his/her in-class participation and learning.

Music Department

This time of the year is very busy for the music department here at Matheson Jr. High.

Listed below is a schedule of our upcoming performances.

- * December 8th, Winter Fest at Cyprus High School. This will involve the Jazz Band. Performers will need to meet Ms. Eyre at Cyprus by 5:30 pm. The concert will start at 6:00 pm. and is free to the public.
- * The winter concerts will be held on Dec. 9th, Tuesday evening with our Choir, Percussion, Tiger Stripes, and Orchestra's performing. The

bands will present their winter concert the following evening, Dec. 10th. All concerts begin promptly at 7:00 pm. and will have a fee of \$2.00 per person or \$5.00 per family collected at the door.

- * Jr. Youth Symphony will have its annual Christmas concerts on Dec. 11th, starting in the morning with performances at 3 different elementary schools and then ending the day with a concert for parents at 7:00 pm. in the West Lake auditorium.
- * Our annual Winter Service Project will be on Dec. 16th. The first concert will be at the Magna

Rec. Center's daycare at 10:00 am. The second concert will be at Wheeler Machinery, one of Matheson's Business partners.

- * Dec. 18th will be the Winter Assembly for the Matheson student body. Parents are more than welcome to join us. The assembly is scheduled to start at 8:15 am.

We look forward to seeing you at one or all of the winter performances. We also want to wish you the happiest and safest of Holiday Seasons.

Counselors Corner

It's hard to believe 1st quarter has come and gone already! Report cards will be handed out to each student in their advisory classes. If you have any questions or concerns please contact the Counseling Center.

Reality Town is coming up on December 3rd. We would love to have parents volunteer to come help us out. Please give us a call if you will be available 8 am to noon that day. Reality Town is an activity we do with our 9th grade students to help them learn

more about how choices made now affect their future.

The weather is changing and we are aware that due to the cold, students have a tendency to get sick. Please remember how important it is for your student to attend school each day ready to learn. If your student needs to be absent, don't forget to call the Counseling Center and send doctor notes. (Ms. Jensen — Attendance — 646-5293)

This year has got off to a great start! We are so lucky to have you as a part of our Matheson Family. Our Counselor Team has enjoyed working with you and your students and we look forward to a great second quarter.

Kriste Winter	Alena Stejskal
Chad Flook	Allen Turner
Suzu Peterson	Luanne Jensen

Granite School District Citizenship

Granite School District secondary school personnel subscribe to the values of the Community of Caring, a program which is part of the curriculum in our entire junior and senior high schools. Our expectations for citizenship reflect the philosophy that embraces the values of that program:

- *Families* - We begin to learn our values in our families.
- *Caring* - Caring is at the heart of a decent life. It leads us to help others and to respect ourselves.
- *Responsibility* - People who care must be willing to take responsibility, which means they are accountable for their actions.
- *Respect* - Those who take responsibility for their own actions will be respected by others.
- *Trust* - When people care for and respect each other, trust takes root and grows.

Citizenship Requirements for Graduation

I. General information and requirements for citizenship in Granite School District:

A. Satisfactory citizenship is a graduation requirement in Granite School District. This includes behavior, attendance, punctuality, and adherence to the rules and policies of the school. Students will be required to earn a 2.000 cumulative Citizenship Point Average (CPA) on a 4.000 point scale in grades 9-12. In addition to academic grades the following citizenship grades will be awarded:

4 - Honor 3 - Good 2 - Satisfactory 1 - Poor 0 - Failure

B. Ninth grade students who earn less than a 2.000 cumulative CPA during the 9th grade year may not be permitted to participate in promotion or the year-end activities.

C. Transfer students will be required to maintain a 2.000 CPA to meet graduation requirements from the time they enroll in Granite School District.

D. High school students who do not achieve the required 2.000 CPA may not graduate. The final decision will be made by each high school's graduation committee.

II. Citizenship Determination:

A. Classroom behavior should reflect the values of a caring community. Behavior should also be appropriate and consistent with each teacher's expectations. The expectations will be described in the disclosure statements received from each teacher. Teachers will be encouraged to provide options for students to improve citizenship during the term being graded.

B. Following are the standards for behavior, attendance, truancy, and tardiness.

1. Behavior - An uncorrected series of negative behaviors or one serious incident could result in a "0" in citizenship.

2. Granite School District Attendance Policy - All children of legal school age residing within the boundaries of the Granite School District shall be required to be in regular school attendance in accordance with the compulsory attendance laws of the State of Utah, (Section 53A-11-101 through Section 53A-11-105, Utah Code, Annotated 1965).

a. Students must be in regular attendance to understand and successfully complete a course of study; therefore, parents and students should accept responsibility and accountability for the student's attendance. Each school has established guidelines to encourage regular attendance.

b. Parents or guardians must provide school personnel a written excuse for each absence.

c. Parents are encouraged to seek prior approval for their student's extended absences. If approved by the administration, those absences will not negatively reflect on the citizenship grade. The administration may require documentation for frequent or extended absences.

3. Truancy - Truancy is defined as an unexcused absence. On the first truancy during any term the student will receive a grade no higher than a "1", and on the second truancy a "0".

4. Tardiness - On the fourth tardy from any one class a student will not receive a grade higher than a "1". Teachers may provide the option of allowing tardies to be made up during the term being graded.

III. Appeals Procedure:

If a student disputes a citizenship grade, it must be resolved with the issuing teacher before the end of the term following the one in which the grade was received.

IV. Due Process:

A. The Citizenship Requirements for Graduation will be provided to each student/parent by the beginning of each school year.

B. Each report card will reflect the citizenship grades for the term and the cumulative CPA, which will reflect progress toward graduation. Sixteen report cards are issued to students who attend school in grades 9-12.

C. Students who fail to achieve a 2.000 cumulative CPA at the end of each year will be notified that graduation is in jeopardy. Students and parents will be invited to meet with the school administration to determine a positive course of action before the student is allowed to register for the following year.

D. Students who fail to meet the citizenship requirement for high school graduation may enroll in the Granite School District Adult Education program and earn a Granite School District diploma.

V. Recognition of Outstanding Citizenship:

Each school will develop ways to recognize outstanding student citizenship. These may include:

- A. recognition from the PTSA
- B. citizenship honor roll
- C. recognition on diploma
- D. recognition on transcript
- E. recognition on diploma for students who complete satisfactory community service projects
- F. recognition at graduation

Homework Study

Homework Study helped over **200 students** during the first quarter and we are seeing improvements in student's grades. Please have your child attend if he/she needs any help with homework. We have some outstanding teachers that are ready to tutor your child and to provide the one-on-one attention that is rarely given in the classroom. Teachers are available from 3:00-4:00 pm Monday thru Thursday each week. There will be **NO Homework Study on Fridays**. The computer labs are also available on Tuesdays and Thursdays and the media center is open for 30

minutes after school Monday-Thursday.

Monday:	Mr. Vuong	Room 223
	Ms. Ibarra	Room 220
Tuesday:	Ms. Arner	Room 206
	Ms. Osborne	Room 108
	Ms. Call	Lab 217
Wednesday:	Mr. Vuong	Room 223

Thursday:	Ms. Osborne	Room 108
	Ms. Arner	Room 206
	Ms. Ibarra	Room 220
	Ms. James	Lab 214

* Students may attend any of the Homework Study classrooms to receive help on most subjects. Teachers will give students a voucher as proof of attendance if requested.

Community of Caring



Our first "Parent Forum" was held October 2, 2008. This forum had approximately 100 parents in attendance. The turn out was very positive. The topic was,

"Persevering the Tough Teenage Years." Parents had the opportunity to address a panel of experts on how to relate to their teens and they discussed teen issues and solutions to resolving those issues. As a follow up to the parent forum, many students will attend a student forum on November 19th where they will share *their* perspective on how to get through the tough teenage years. Ken Hopkins will be our guest speaker who will help guide the forum and set the

stage for future forums where students can attend and be heard.

Community of Caring will sponsor more Parent/Teen forums that will be held in the evenings. We will have special guests and interesting topics that will be discussed. Please support our program, the school and your student by attending these forums with your child.

Community Council

The Community Council has been very busy the past couple of months working on allocating the money that Matheson will receive from Q.T.S.A. (Quality Teaching and Student Achievement) and L.A.N.D. Trust (Learning And Nurturing Development) to the projects that have been proposed by the teachers and staff at Matheson. Many projects have been proposed and those that have been approved have met the District and State guidelines as being Literacy and Numeracy based.

Here are the projects that are available to your student;

Homework Study — see article in this newsletter

Open Computer Lab — see Homework Study article in this newsletter

Stage Crew — Mr. Albertsen, Room 106

Project Citizen Youth Organization — Mr. Beal, Room 112

Tiger Culture Club — Ms. Stagg, Room 230

Reality Town (9th Graders) — Counselors, Counseling Center

Science Fair — Ms. Daraban, Room 229 & Ms. Stagg, Room 230

The Community Council meets once each month in the Family Center in the Library at Matheson at 3:30 p.m. The meetings of the Matheson Junior High School Community Council are open to the public. Time is allotted at the end of each meeting for community comment. Each speaker is allowed a maximum of 3 minutes to address the council. Comments must be about current agenda topics or ones addressed by the council at previous meetings. Speakers must pre-arrange their opportunity to address the council. If you would like to be placed on the next meeting's agenda, please send an email to dpennington@graniteschools.org



Cafeteria

Attention Hungry People: Come one come all to the best cafeteria on the West side of the Valley. Matheson Junior High serves up some good eats. Breakfast is served from 7:20 am to 7:43 am. Please pay before **10:00 am** so that your *student will not have*

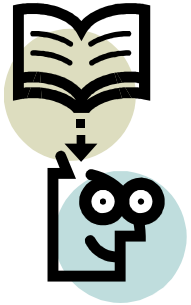
to wait until the end of the lunch line. Lunch prices: \$1.60 students & \$2.50 adults

Thanksgiving lunch will be served on November 20th turkey with dressing, dinner roll, sunshine bar, mixed vegetables, potatoes & gravy, fruit and vegetable bar

along with chocolate or white milk.

The Holiday dinner will be served on December 11th sliced ham, a-gratin potatoes, dinner roll, fruit salad, dessert.

Student of the Month



Congratulations to the following students for being nominated and selected as "Student of the Month" for October and November

2008. Keep up the great work! You are examples to your peers.

7th graders: **Kierstin Erickson, Justin Green, Haleigh Leishman, Matthew Canfield**

8th graders: **Alma Avila, Maximiliano Aguado, Myrhia Peterson, Drew Wood**

9th graders: **Cheyenne Evans, Jimmy Zavala, Clarissa Boston, Kelly Pope Jr.**



Attendance

It is very important that your student be to school every day, all day, and on time to all classes. If your student does need to miss school, you may excuse the absence by a simple phone call to Ms. Jensen at 646-5293 or note to the school. If your student missed due to a dentist, orthodontist, or any type of doctor appointment, please bring in a note from the doctor or they are welcome to fax an excusal to the Counseling Center at 646-5292.

Students who are late for school or need to leave school early should check-in and check-out through Ms. Jensen in the Counseling Center, also referred to as our Attendance Office. For the safety of your student, he/she will only be released to those persons

listed on the student's emergency contact card when checking out of school.

Seven days of excused absences within a school year are considered excessive and subsequent absences may require a doctor's note. (Parents may excuse seven days worth of absences on their word alone.) Students with excessive unexcused absences may be referred to Third District Juvenile Court for truancy and be required to pay a truancy fine.

We understand that students must be absent from school occasionally. We would much rather work together now to stop an attendance issue before it gets started. Please let us know how we can be of help to you.

Recycle



Do you have old phone books, stacks of newspapers, or cardboard boxes that you need to get rid of? Matheson has a recycle bin on the north

side of the parking lot that you can put all of your old paper goods into for recycling. Matheson students in Ms. Call's Teacher Advisory class have set up all the classrooms and offices with recycle bins and gather them on a weekly basis to add to the bin outside of the school.

We encourage you to take advantage of this recycle bin and help clean out your living area while helping Matheson and the environment by recycling.

P.T.S.A.



THANK YOU to all our volunteers who helped with the Scoliosis and Vision screenings. We are looking forward to helping the school with Reality Town on December 3. If you would like to help with Reality Town and have not been contacted please contact Suzy in the counseling center at 646-5294.

We had a huge turn out from our REFLECTIONS program and more than doubled our entries from last year! The theme this year is WOW... and we really got some WOW entries. We want to thank everyone who participated and we will be announcing the Reflections winners on November 25.

As we ease into another holiday season we want to remind you to save those Box Tops! We have turned in over 6300 Box Tops in the last few months and would like to thank everyone who helped make it possible, especially our Box Tops coordinator, Wendy Christensen.

Coming soon... look for details about our upcoming advisory Box Tops competition. We have also included additional information regarding Box Tops in this newsletter as to which products to purchase.

We are currently looking for 2009-10 board members. If you are interested in being on our board or if you are interested in helping with the nominating committee please email MathesonPTSA@gmail.com

Last but not least, **THANK YOU** to all the families, friends, faculty and staff for supporting our membership drive this year. Not only does your membership support us locally but every bit of membership funds help each level of PTSA, even nationally. This provides continued support for important programs like Reflections, teacher appreciation, healthy lifestyles, Three for Me and much more.

Did you know PTSA members also receive exclusive

benefits? Places like Barnes and Noble, Southwest Airlines, Liberty Mutual insurance, Sharp electronics, and T-Mobile have partnered with PTSA to offer our members exclusive discounts. In addition to the discounts, PTSA receives a percentage of royalties from the sale. For details visit: www.pta.org.

You will need your membership card to log in. Membership cards are on their way! Look for them coming home with your students in the upcoming days.

Watch for our PTSA page coming soon to the school website. In the meantime if you have questions, comments, or concerns regarding Matheson PTSA please send an email to MathesonPTSA@gmail.com

Thank you for your continued support!

Box Tops for Education

Dear Parents and Guardians,

Welcome to another great year at Matheson Junior High! This year our goal is to raise \$3000.00 for our PTSA to support our school, through Box Tops For Education.

Box Tops offers three easy ways to earn cash for our school through everyday activities such as buying groceries, shopping online, and purchasing books.

Clip -- Clip Box Top coupons from hundreds of participating products and send them to school. Box Tops coupons are worth 10 cents each when our school redeems them from Box Tops for Education.

Shop -- Shop at your favorite online stores through the Box Tops Marketplace (btf.com/marketplace). Up to 8% of each qualifying purchase is automatically donated to our school (when you designate Matheson as your school to

sign up under). There is no additional cost to your purchase and many exclusive deals and discounts can be found!

Buy Books -- Purchase books online at Barnes & Noble through Box Tops Reading Room. Our school will receive 6% of your new book purchases and 3% of all other online purchases.

One of the easiest ways you can help is to sign up to support our school at btf.com. You will learn about new and easy ways to help our school earn the extra cash it needs.

Exclusive web benefits:

- See how much our school is earning with Box Tops
- Enter online promotions for chances to win bonus Box Tops
- Print money-saving coupons for your

favorite Box Tops brands

Make mealtime easier with family-pleasing recipes

Plus, you can sign up for e-mail newsletters to receive new product updates, and Box Tops members-only deals and discounts at Box Tops Marketplace retail stores.

To learn more, visit btf.com--and thanks for choosing to make a difference for our school with Box Tops!

Sincerely,
PTSA

<http://www.boxtops4education.com/Downloads/Coordinator/Clip/ParticipatingProductsFlyer2008.pdf>



MATHESON
#84301

It's Easy... just shop, swipe your card, & earn!

Giving more back to the community!

The Earn & Learn Program was designed to make fundraising easy by simply using your Smith's Fresh Values Card. Smith's is proud to continue offering you the "Earn & Learn" program, which has proved so successful in contributing much-needed financial support to schools and community organizations dedicated to serving children.

HOW MATHESON EARNS MONEY!!

- Register your Smith's Fresh Values Card online at www.smithsfoodanddrug.com. Remember to use Matheson Junior High School's name and organization number #84301.
- Every time you shop for groceries and swipe your Fresh Values card, Matheson automatically starts earning a donation.
- If you do not have Internet access you can sign up by calling 1.800.764.8897
- You must register your Smith's Fresh Values Card each year. If you were registered last year, please register your card again this year so Matheson can continue to earn.



Clip Box Tops—earn cash for our school!

Earn cash for our school every time you shop for groceries. Clip Box Tops from **hundreds of your favorite products.*** Each Box Tops coupon is worth 10¢ to our school—and **that adds up fast!**

<p>BAKING</p> <p>Desserts:</p> <ul style="list-style-type: none"> Almond Joy® Dessert Bar Mix Betty Crocker® Angel Food Cake Mix Betty Crocker Complete Desserts® Betty Crocker® Cookie Mix Betty Crocker® Frosting Betty Crocker® Sunkist® Lemon Bars Betty Crocker® Brownie Mix Betty Crocker® Variety Dessert Mixes Betty Crocker® Warm Delights® Desserts Betty Crocker® Warm Delights® Minis Hershey's® Brownie Mix Reese's® Dessert Bar Mix Breads, Muffins and Rolls: Betty Crocker® Cornbread & Muffin Mix Betty Crocker® Muffin Mixes Betty Crocker® Premium Muffin & Quick Bread Mix Betty Crocker® Pancake Mix Boxes Betty Crocker® Quick Bread Mix Betty Crocker® Pizza Crust Bisquick® Baking Mix Boxes 	<p>Cookie Crisp® Cereals:</p> <ul style="list-style-type: none"> Cookie Crisp® Double Chocolate Cookie Crisp® Peanut Butter Cookie Crisp® <p>Curves™ Cereals:</p> <ul style="list-style-type: none"> Curves™ Fruit and Nut Crunch Cereal Curves™ Honey Crunch Curves™ Whole Grain Crunch <p>Disney's® Cereals:</p> <ul style="list-style-type: none"> Disney's® Little Einsteins™ Fruity Stars Disney's® Mickey Mouse Clubhouse Berry Crunch Disney's® My Friends Tigger & Pooh Corn Puffs Disney's® Princess Fairytale Flakes Dora The Explorer® <p>Fiber One® Cereals:</p> <ul style="list-style-type: none"> Fiber One® Fiber One® Caramel Delights™ Fiber One® Honey Clusters® Fiber One® Raisin Bran Clusters® Golden Grahams® Honey Nut Clusters® Kix® Cereals: Kix Berry Berry Kix® 	<p>Totino's® Pizza Rolls® Pizza Snacks</p> <p>MEALS & SIDES</p> <p>Betty Crocker® Potatoes:</p> <ul style="list-style-type: none"> Betty Crocker® Casserole Potatoes Betty Crocker® Potato Buds® Mashed Potatoes Betty Crocker® Seasoned Mashed Potatoes Betty Crocker Seasoned Skillets™ Betty Crocker® Deluxe Potatoes <p>Helpers:</p> <ul style="list-style-type: none"> Hamburger Helper® Hamburger Helper® Microwave Singles® Hamburger Helper® Microwave Singles® Cup Chicken Helper® Chicken Helper® Microwave Singles® Tuna Helper® Old El Paso®: Old El Paso® Taco Shells Old El Paso® Tortillas Old El Paso® Dinner Kits Progresso® Soup Multi-packs Suddenly Salad® Mixes Wanchai Ferry™ Dinner Kits 	<p>Flavored Shapes</p> <ul style="list-style-type: none"> Tonka™ Fruit Flavored Shapes Transformers Fruit Shapes <p>Fruit Flavored Snacks:</p> <ul style="list-style-type: none"> Betty Crocker® Fruit Gushers® Betty Crocker® Fruit by the Foot® Betty Crocker® Fruit Roll-Ups® Fruit by the Foot® Crazy Feet Fruit Roll-Ups® Crazy Pix™ Fruit Roll-Ups® Fruit Stickerz™ Fruit by the Foot® Mini Feet Fruit Roll-Ups® Mini Rolls Milk 'n Cereal Bars Nature Valley® Granola Bars: Nature Valley® Chewy Granola Bars with Yogurt Nature Valley® Chewy Trail Mix Bars Nature Valley® Crunchy Granola Bars Nature Valley® Healthy Heart Chewy Granola Bars Nature Valley® Roasted Nut Crunch Bars Nature Valley® Sweet & Salty Nut Granola Bars 	<p>Paper Towels:</p> <ul style="list-style-type: none"> SCOTT® Paper Towels VIVA® Paper Towels <p>Wipes:</p> <ul style="list-style-type: none"> COTTONELLE® For Kids Flushable Moist Wipes COTTONELLE FRESH® Flushable Moist Wipes HUGGIES® Baby Wipes SCOTT® Pre-Moistened Wipes <p>PERSONAL CARE</p> <p>KOTEX® products:</p> <ul style="list-style-type: none"> KOTEX® Lightdays® Pantliners KOTEX® Maxi Pads KOTEX® Security® Tampons KOTEX® Ultra Thin Pads <p>POISE® products:</p> <ul style="list-style-type: none"> POISE® Liners POISE® Pads POISE® Panty <p>DEPEND® products:</p> <ul style="list-style-type: none"> DEPEND® Belted Shields DEPEND® Fitted Briefs DEPEND® Guards for Men DEPEND® Underwear DEPEND® Adjustable Underwear
<p>BEVERAGES</p> <p>Nestlé® Juicy Juice®</p> <p>Nestlé® Juicy Juice® Harvest Surprise®</p> <p>CEREAL</p> <p>Basic 4®</p> <p>Cheerios® Cereals:</p> <ul style="list-style-type: none"> Cheerios Apple Cinnamon Cheerios® Berry Burst Cheerios® Cheerios Crunch™ Frosted Cheerios® Fruity Cheerios® Honey Nut Cheerios® MultiGrain Cheerios® Team Cheerios® Yogurt Burst Cheerios® <p>Cascadian Farm® Cereals:</p> <ul style="list-style-type: none"> Cinnamon & Raisin Granola Cascadian Farm® Dark Chocolate Almond Granola Cascadian Farm® Fruit & Nut Granola Cascadian Farm® Hearty Morning® Cascadian Farm® Purely O's® Cascadian Farm® Clifford™ Crunch Cascadian Farm® Honey Nut O's Cascadian Farm® Maple Brown Sugar Granola Cascadian Farm® Multi-Grain Cascadian Farm® Oats & Honey Granola Cascadian Farm® Vanilla Almond Crunch Cascadian Farm® Raisin Bran <p>Chex® Cereals:</p> <ul style="list-style-type: none"> Chex® Chocolate Chex® Cinnamon Chex® Corn Chex® Honey Nut Chex® Multi-Bran Chex® Rice Chex® Strawberry Chex® Wheat Chex® <p>Cocoa Puffs® Cereals:</p> <ul style="list-style-type: none"> Cocoa Puffs® Cocoa Puffs® Combos 	<p>Cinnamon Toast Crunch® Cereals:</p> <ul style="list-style-type: none"> Cinnamon Toast Crunch® French Toast Crunch® Reduced Sugar Cinnamon Toast Crunch® Lucky Charms® Cereals: Lucky Charms Berry Lucky Charms® Chocolate Lucky Charms® Nature Valley® Cereals: Nature Valley® Cinnamon Nature Valley® Oats 'n Honey Nature Valley® Organic Vanilla Nut Oatmeal Crisp® Cereals Oatmeal Crisp® Crunchy Almond Oatmeal Crisp® Hearty Raisin Oatmeal Crisp® Maple Brown Sugar <p>Para Su Familia Raisin Bran Raisin Nut Bran</p> <p>Reese's® Puffs®</p> <p>Total® Cereals:</p> <ul style="list-style-type: none"> Total® Total® Brown Sugar & Oat Total® Cinnamon Crunch Total® Cranberry Crunch Total® Honey Clusters® Total® Raisin Bran Total® With Strawberries Total® Vanilla Yogurt Whole Grain Total® <p>Trix®</p> <p>Wheaties®</p>	<p>REFRIGERATED & DAIRY</p> <p>Cookies and Bars:</p> <ul style="list-style-type: none"> Pillsbury® Brownie Batter Pillsbury® Create 'n Bake® Cookies Pillsbury® Ready To Bake!™ Cookies Pillsbury® Simply Bake® Bars <p>Breads and Rolls:</p> <ul style="list-style-type: none"> Pillsbury® Crescent Rolls Pillsbury® Crescent Rounds Pillsbury® Flaky Twists Pillsbury® Grands!® Biscuits Pillsbury® Grands!® Sweet Rolls Pillsbury® Pizza Crust Pillsbury® Sweet Rolls <p>Yogurt:</p> <ul style="list-style-type: none"> Yoplait® Go-GURT® Fizzix™ Yogurt Yoplait® Trix® Multipack Yogurt Yoplait® Original Family Pack Yoplait® Go-GURT® Yogurt Yoplait® Kids Yogurt Yoplait® Kids Yogurt Drink 	<p>BABY & CHILD CARE</p> <p>COTTONELLE® products:</p> <ul style="list-style-type: none"> COTTONELLE® For Kids Bath Tissue COTTONELLE® For Kids Flushable Moist Wipes <p>GOODNITES® products:</p> <ul style="list-style-type: none"> GOODNITES® Sleep Pants/Sleep Shorts GOODNITES® Underpants <p>HUGGIES® products:</p> <ul style="list-style-type: none"> HUGGIES® Baby Wipes HUGGIES® Clean Team® Products HUGGIES® Diapers HUGGIES® LITTLE SWIMMERS® Swim Pants HUGGIES Natural Care® Diapers HUGGIES® Snug'n Dry Diapers HUGGIES Supreme® Diapers <p>PULL-UPS® Training Pants</p>	<p>DISPOSABLE TABLEWARE & WASTE BAGS</p> <p>Disposable Cups:</p> <ul style="list-style-type: none"> Hefty® Clear Colors Disposable Cups Hefty® Crystal Clear Disposable Cups Hefty® Easy Grip® Disposable Cups Hefty® Zoo Pals® Cups <p>Disposable Plates and Serveware:</p> <ul style="list-style-type: none"> Hefty® Crystal Clear Plates Hefty® Elegantware® Plates and Bowls Hefty® Everyday Foam Plates and Bowls Hefty® Hearty Meals™ Plates and Platters Hefty® Superweight™ Plates and Bowls Hefty® Supreme™ Plates and Bowls Hefty® Zoo Pals® Plates and Bowls <p>Waste Bags:</p> <ul style="list-style-type: none"> Hefty® Cinch Sak® Waste Bags Hefty® EasyFlaps® Waste Bags Hefty® The Gripper® Tall Kitchen Waste Bags Hefty® Kitchen Fresh® Tall Kitchen Waste Bags Hefty® Ultra Flex™ Waste Bags
<p>FROZEN</p> <p>Green Giant® Vegetables:</p> <ul style="list-style-type: none"> Green Giant® Bagged Vegetables with Sauce Green Giant® Frozen Complete Skillet Meals Green Giant® Giant Bites™ Vegetables Green Giant® Just For One® Vegetables Green Giant® Nickelodeon® Frozen Bagged Vegetables Green Giant® Select Vegetables <p>Pillsbury® Microwave Biscuits</p> <p>Pillsbury® Toaster Strudel® Pastries</p>	<p>Chex Mix® Bars</p> <p>Chex Mix® Snack Mix</p> <p>100 Calorie Chex Mix® Snack Mix</p> <p>Chex Mix® Select Snack Mix</p> <p>Curves™ Snack Bars</p> <p>Dunkaroos® Snacks</p> <p>Fiber One® Bars</p> <p>Fiber One™ Toaster Pastries</p> <p>Fruit-Flavored Shapes:</p> <ul style="list-style-type: none"> Batman™ Fruit Flavored Shapes Care Bears™ Fruit Flavored Shapes My Little Pony™ Fruit Flavored Shapes Polly Pocket™ Fruit Flavored Shapes Fairytale Princess® Fruit Flavored Shapes Scooby-Doo™ Fruit Flavored Shapes Shark Bites Fruit Flavored Snacks Spider-Man® Fruit Flavored Shapes Teenage Mutant Ninja Turtles™ Fruit 	<p>SNACKS</p> <p>Caribou Coffee® Bars</p> <p>Cascadian Farm® Granola Bars</p> <p>Cascadian Farm® Sweet & Salty Bars</p> <p>Cheerios® Snack Mix</p> <p>Chex Mix® Bars</p> <p>Chex Mix® Snack Mix</p> <p>100 Calorie Chex Mix® Snack Mix</p> <p>Chex Mix® Select Snack Mix</p> <p>Curves™ Snack Bars</p> <p>Dunkaroos® Snacks</p> <p>Fiber One® Bars</p> <p>Fiber One™ Toaster Pastries</p>	<p>STORAGE BAGS & CONTAINERS</p> <p>Storage Bags:</p> <ul style="list-style-type: none"> Ziploc® Brand Big Bags Ziploc® Brand DoubleGuard® Freezer Bags Ziploc® Brand Easy Zipper Freezer Bags Ziploc® Brand Easy Zipper Storage Bags Ziploc® Brand Expandable Bottom Bags Ziploc® Brand Freezer Bags Ziploc® Brand Sandwich Bags Ziploc® Brand Snack Bags Ziploc® Brand Storage Bags Ziploc® Brand Treat Bags Ziploc® Brand Zip 'n Steam™ Bags <p>Containers:</p> <ul style="list-style-type: none"> Ziploc® Brand Snap 'n Seal Containers Ziploc® Brand Twist 'n Lock® Containers 	<p>PRODUCTS WITH LIMITED AVAILABILITY</p> <p>Breads and Rolls:</p> <ul style="list-style-type: none"> Country Hearth® Fresh Bread Fiber One® Bagels Fiber One® English Muffins Fiber One® Bread Fiber One™ Hamburger Buns Fiber One™ Hot Dog Buns Pillsbury® Bagels Pillsbury® Buns Pillsbury® Bread Pillsbury® English Muffins <p>Cereals:</p> <ul style="list-style-type: none"> Boo Berry® Cereal Count Chocula® Cereal Country® Corn Flakes Franken Berry® Cereal Kaboom® Cereal <p>Cookies:</p> <ul style="list-style-type: none"> Sports Shape® Cookies

Visit boxtops4education.com for more great ideas to earn cash for our school!

*Box Tops Coupons may not appear on all sizes/varieties of participating products. NESTLÉ® and JUICY JUICE® are registered trademarks of Société des produits Nestlé S.A., Vevey, Switzerland.

Ziploc® is a registered trademark of S.C. Johnson and Son, Inc. All rights reserved. Kleenex®, Scott®, Viva®, Huggies®, Pull-Ups®, Goodnites®, Kotex®, Depend®, Poise® and Cottonelle® are the registered trademarks of Kimberly-Clark Worldwide, Inc.

Hefty®, Easy Grip®, Elegantware®, Zoo Pals®, The Gripper®, Cinch Sak® and Kitchen Fresh® are registered trademarks of Pactiv Corporation. Trademarks referred to herein are the property of their respective owners.



**HOME
OF THE
TIGERS**

3650 S. Montclair Street
Magna, UT 84044

801-646-5293—Attendance
801-646-5290—Main Office
801-646-5294—Counselors
801-646-5296—Cafeteria
801-646-5291—Financial
801-646-5299—Fax Main Office
801-646-5292—Fax Counseling Center

**MATHESON JUNIOR
HIGH SCHOOL**

*DON'T HIDE YOUR TIGER
PRIDE*

We're on the Web!
www.graniteschools.org/jr/matheson

Non-Profit Org.
U.S. POSTAGE
PAID
Salt Lake City, UT
Permit No. 1789

Calendar of Events



November 18—3:30 p.m.
Community Council Meeting

November 18—7:00 p.m.
Fall Play Performance

November 19—Community
of Caring Day Forum (by
invitation only)

November 19—3:00 p.m. Girls Volleyball vs Kennedy Jr.

November 19—3:00 p.m. Wrestling Match @ Kennedy Jr.

November 19—7:00 p.m. Fall Play Performance

November 20—9:00 a.m. Fall Play Matinee

November 20—7:00 p.m. Fall Play Performance

November 25—8:00 a.m. Assembly for Reflections and Promising Practice Award

November 25—9:15 a.m. Power In You (by invitation only)

November 25—10:00 a.m. Granite Youth Symphony Performance

November 26—No School—Thanksgiving Recess

November 27—No School—Happy Thanksgiving!

November 28—No School—Thanksgiving Recess

December 2—7:00 p.m. Reflections Contest Awards Night

December 3—Reality Town (9th graders)

December 3—3:00 p.m. Girls Volleyball vs Kearns Jr.

December 3—3:00 p.m. Wrestling Match @ Kearns Jr.

December 5—Midterm

December 8—3:00 p.m. Girls Volleyball @ Brockbank Jr.

December 8—3:00 p.m. Wrestling Match vs Brockbank Jr.

December 8—6:00 p.m. Magna City Winterfest @ Cyprus

December 9—7:00 p.m. Winter Concert

December 10—7:00 p.m. Winter Concert

December 10—3:00 p.m. Wrestling Match @ Bennion Jr.

December 11—3:00 p.m. Girls Volleyball Quarter Finals

December 11—7:00 p.m. Junior Youth Symphony Christmas Concert @ Westlake Jr.

December 15—3:00 p.m. Wrestling Match vs Jefferson Jr.

December 16—Music Service Project

December 16—3:00 p.m. Girls Volleyball Semi-Finals

December 16—3:00 p.m. Community Council Meeting

December 18—8:15 a.m. Winter Music Assembly

December 18—3:00 p.m. Girls Volleyball Championship

December 22, 2008—January 2, 2009—No School—Winter Recess

January 5—School Resumes

January 6—3:00 p.m. Academic Games @ Hunter Jr.

January 10—Wrestling JV Tournament

January 12—3:00 p.m. Wrestling Match @ Valley Jr.

January 13—3:00 p.m. Academic Games vs Brockbank

January 13—6:30 p.m. Dance Concert

January 14—6:30 p.m. Dance Concert

January 15—2nd Quarter Ends

January 16—No School—S.N.A.D.

January 17—Wrestling Divisions

January 19—No School—Martin Luther King Jr. Day

January 20—3rd Quarter Begins

\$2 Student
\$5 Family