

Population Analysis Committee Study List Update

June 14, 2022





Agenda

1. Context
2. Review Process
3. Community Engagement/Feedback
4. Van Winkle/7th East Corridor Study
5. Skyline, Olympus, Cottonwood Network Study





Context

Declining US birth rate could beget lower public school enrollment, closures

Published Nov. 27, 2018

By Jessica Campisi
Associate Editor, K-12



Schools are emptying on the Salt Lake Valley's east side and overflowing in the west. Here's why.

Districts face decisions about building new schools in growing communities while also considering consolidations and closures in aging neighborhoods.



The Process

WHAT IS A POPULATION ANALYSIS STUDY?

GRANITE SCHOOL DISTRICT PLANNING & BOUNDARIES DEPARTMENT

START

DECEMBER - FEBRUARY



Every year, the Population Analysis Committee (PAC) gathers ideas, suggestions, information, and feedback from schools and communities for possible studies related to school boundaries and student populations.

Potential Studies

FEBRUARY - MAY



Representatives from the PAC meet with school community councils and host community meetings to study needs and the impacts of potential changes. Multiple solutions are explored.

FEBRUARY



The PAC presents a list of potential population analysis studies to the Board of Education. The Board approves or rejects the list.

JUNE

The PAC presents an initial written report to the Board of Education. This report includes the PAC's findings and includes recommendations for potential solutions. *The PAC will provide appropriate notice to the impacted communities.



Input from Board

SEPTEMBER



The PAC hosts public open house meetings. All public comments are gathered and finalized.

AUGUST



Potential solutions are refined based on input from the Board of Education. An initial report is publicized and public comment is solicited.

Feedback for Final Recommendations

OCTOBER - NOVEMBER

The PAC presents a final plan to the board in a public hearing during a Board of Education meeting. The final plan is either adopted, modified or rejected by the board over the course of two readings.



FINISH



Any approved boundary change, school consolidation or school closure is implemented on a timeline specific to the needs of affected schools and communities.



*In compliance with state code (53G-4-402)



Seeking Solutions

FEBRUARY - MAY

Representatives from the PAC meet with school community councils and host community meetings to study needs and the impacts of potential changes. Multiple solutions are explored.



Population Analysis Step 3

JUNE

The PAC presents an initial written report to the Board of Education. This report includes the PAC's findings and includes recommendations for potential solutions.
*The PAC will provide appropriate notice to the impacted communities.



Input from Board



AUGUST

Potential solutions are refined based on input from the Board of Education. An initial report is publicized and public comment is solicited.



Outreach efforts

OPEN HOUSE MEETINGS

April 11 - Cottonwood High School

April 13 - Granite Park Junior High

April 18 - Olympus High School

SCHOOL COMMUNITY COUNCIL MEETINGS

Olympus High School	3/9/2022
Evergreen Junior High	3/7/2022
Olympus Junior High	2/10/2022
Millcreek Elementary	3/3/2022
William Penn Elementary	4/26/2022
Rosecrest Elementary	4/11/2022

Crestview Elementary	3/2/2022
Driggs Elementary	2/17/2022
Cottonwood Elementary	2/9/2022
Skyline High School	3/17/2022
Churchill Junior High	3/8/2022
Wasatch Junior High	3/3/2022

Upland Terrace Elementary	4/15/2022
Cottonwood High School	3/1/2022
Bonneville Junior High	2/14/2022
Granite Park Junior High	3/1/2022
Lincoln Elementary	2/18/2022
Moss Elementary	3/8/2022

Oakwood Elementary	2/15/2022
Spring Lane Elementary	2/8/2022
Twin Peaks Elementary	2/10/2022
Walker Elementary	3/3/2022
Wilson Elementary	2/7/2022
Woodstock Elementary	2/14/2022

ADDITIONAL/REQUESTED MEETINGS

Millcreek City Council	4/25/2022
South Salt Lake City C.	5/11/2022
Millcreek SCC & Community	5/12/2022

Oakwood Elem. Town Hall	5/16/2022
Holladay City Council	5/19/2022
Salt Lake County Council	5/24/2022

Cottnwd. Community Night	5/12/2022
Cottonwood Elementary	4/28/2022
Granite Education Assoc.	5/18/2022

Murray City Council	6/21/2022
Multiple Individual and Small Group Meetings	April-May

School Mentions

Feedback Responses by School Network

49	Cottonwood High School
53	Bonneville Junior High
26	Oakwood Elementary
26	Spring Lane Elementary
9	Twin Peaks Elementary
31	Woodstock Elementary
2	Granite Park Junior High
2	Lincoln Elementary
3	Moss Elementary
2	Walker Elementary
4	Wilson Elementary
207	Cottonwood Network Total

97	Olympus High School
37	Evergreen Junior High
3	Millcreek Elementary
20	William Penn Elementary
8	Rosecrest Elementary
110	Olympus Junior High
58	Cottonwood Elementary
31	Crestview Elementary
33	Driggs Elementary
397	Olympus Network Total

40	Skyline High School
5	Churchill Junior High
9	Eastwood Elementary
5	Oakridge Elementary
3	Wasatch Junior High
14	Morningside Elementary
18	Upland Terrace Elementary
94	Skyline Network Total

Total - 698
Responses collected as of May 25



How is the feedback used by the PAC

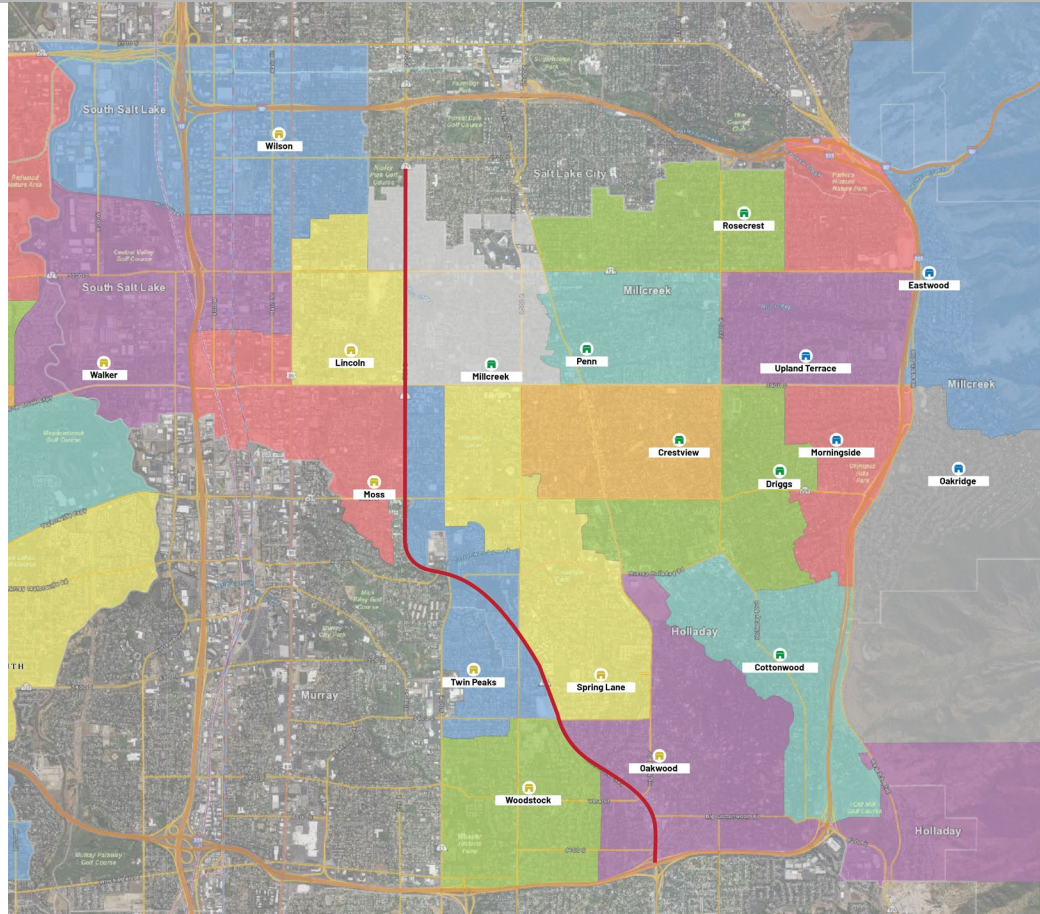
Every parent/family/individual deserves a voice in this process.

At the same time, it is important to understand that feedback is not a vote.

Feedback is used to inform the PAC and Board, to solicit ideas and solutions, and to better understand our communities PRIOR to the development of proposals.



Van Winkle/700 East Corridor Study



Van Winkle/7th East corridor study

PAC Recommendation: Continue Study

Rationale:

- Ongoing small school concerns
 - District data
- Davis Demographic's forecast

Continue with this study and develop proposals for consolidation/school closure of 1-3 schools.



Next Steps

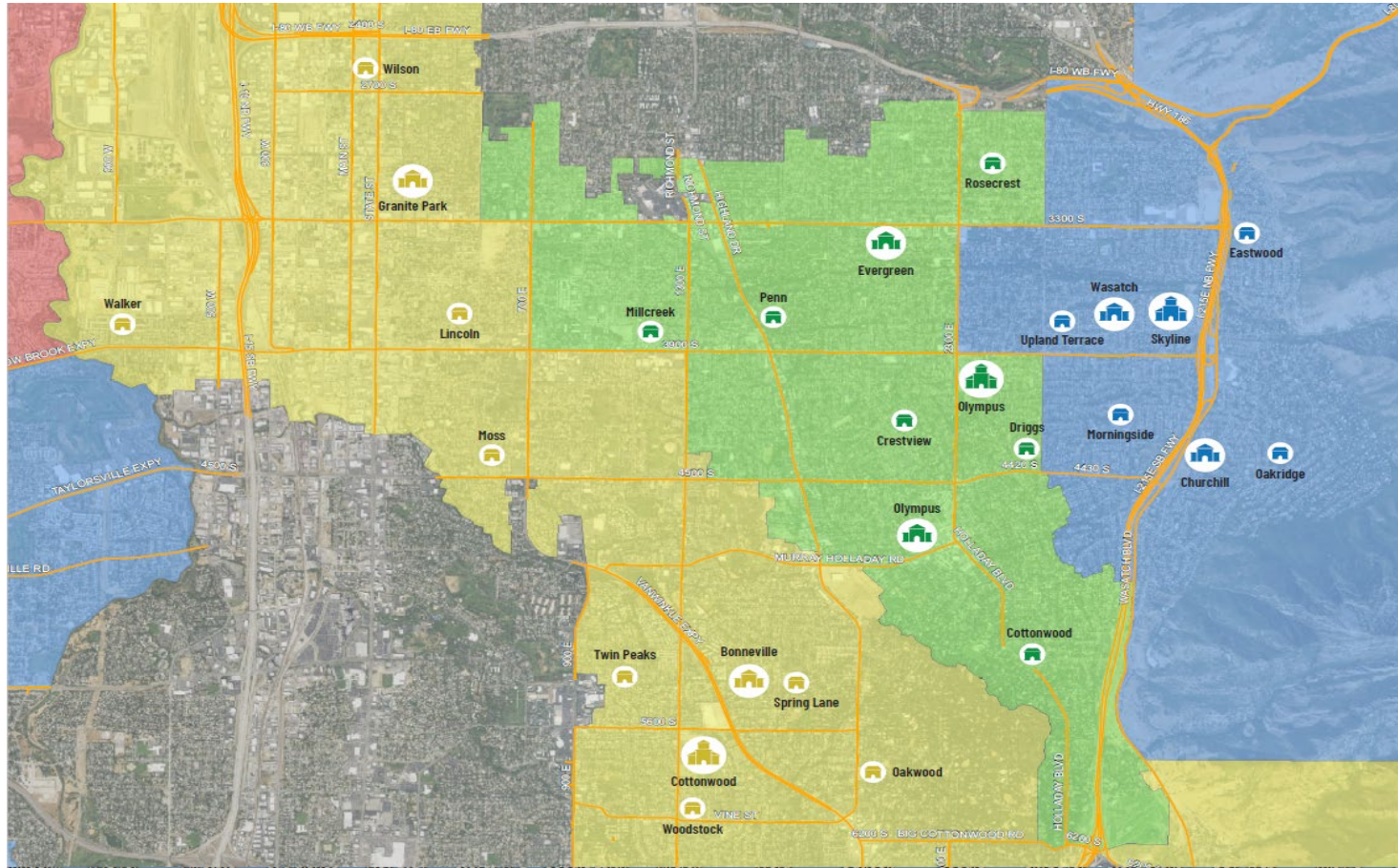
➤ **Public Comment**

➤ **Board Discussion**

➤ **Board Action**



Skyline, Olympus, Cottonwood Study





The Goal of this study?

Three Robust High School Networks

Ensure our students and families have access to the maximum number of opportunities in each of these networks.





Skyline, Olympus, Cottonwood Study

PAC Recommendation: Pause this study

Rationale:

Does adjustment of the high school boundaries and/or feeders change attendance patterns?

- PAC believes boundary adjustments can *eventually* have some efficacy, but in this area, with its higher rate of open enrollment permits, the impact is likely diminished.





Skyline, Olympus, Cottonwood Study

PAC Recommendation: Pause this study

Rationale:

Skyline High rebuild may draw more students from Olympus, Cottonwood and other schools. As such, further adjustments could be necessary in the future.





Skyline, Olympus, Cottonwood Study

PAC Recommendation: Pause this study

Rationale:

Other ongoing efforts to enhance programming at Cottonwood may have the desired effect of attracting more students.

- Ongoing discussions with AMES and local colleges and universities.
- Ongoing marketing efforts.





Skyline, Olympus, Cottonwood Study

PAC Recommendation: Pause this study

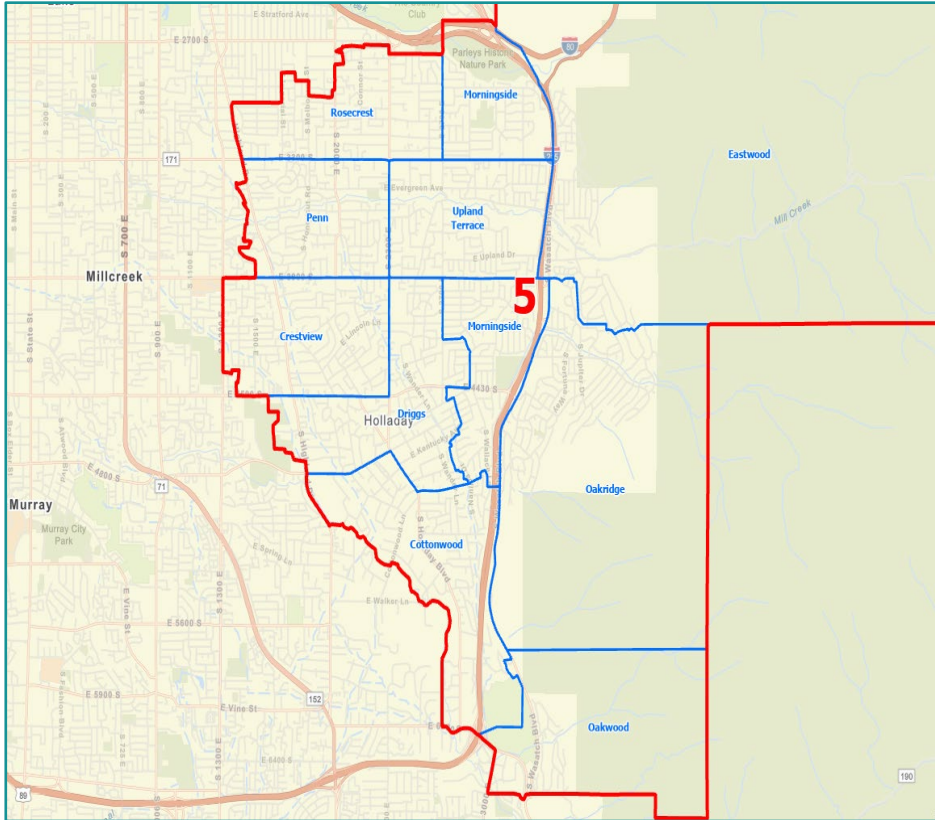
Rationale:

Confusion between the two studies.

Need to make decisions on the Van Winkle/700 east Study.
PAC needs to understand the impacts of those adjustments.



Skyline, Olympus, Cottonwood Study



PAC Recommendation: Pause Study

Rationale:

Area 5 (Davis Demographics Designation) is anticipated to be studied in a future round, and we would want to understand the impacts of any potential adjustments emanating from that study.



What does a “pausing” of the study mean?

PAC would no longer actively pursue this study. Rather, we will await the outcomes of current efforts being made to address the goals of the study.





Skyline, Olympus, Cottonwood Study

PAC Statement:

The purpose of the study was to find ways to maintain three robust high school networks on our East side. While the study did not find a perfect solution, it has succeeded in fostering meaningful conversation, broken down many false perceptions within communities and expanded everyone's vision for ways to achieve the stated goal.





Next Steps

➤ **Public Comment**

➤ **Board Discussion**

➤ **Board Action**

